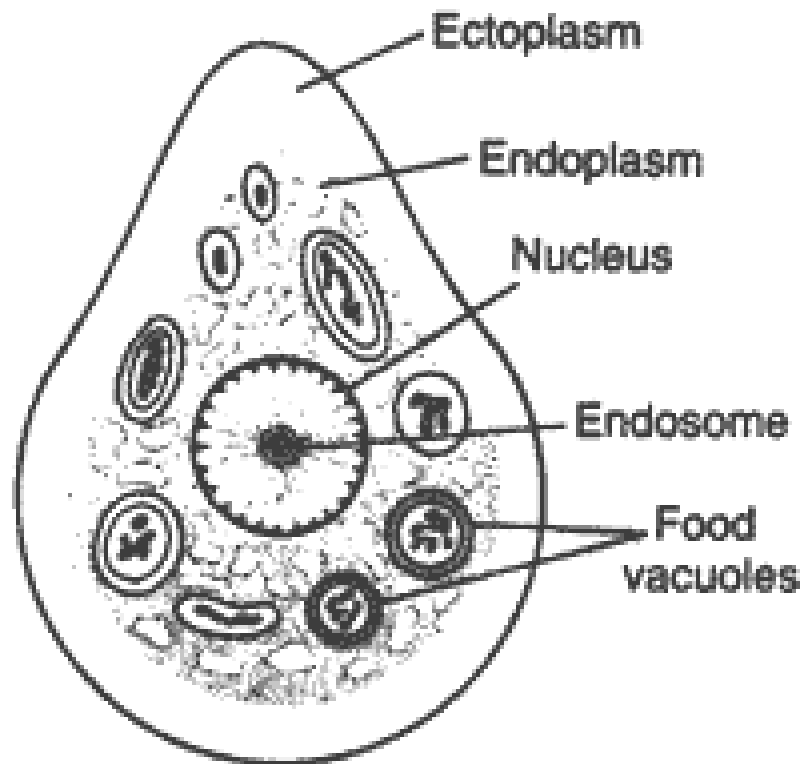


Entamoeba gingivalis

- **Trophozoites live in the oral cavity of humans residing in the gingival pockets near the base of the teeth. No cyst form reported.**
- **The trophozoite stage of *E. gingivalis* is morphologically similar to that of *E. histolytica***
- **Both can be coughed up in sputum specimens (for the latter, when present in pulmonary abscesses)**
- **Usually non-pathogenic/symbiotic.**
- **Can ingest bacteria, leukocytes, erythrocytes**

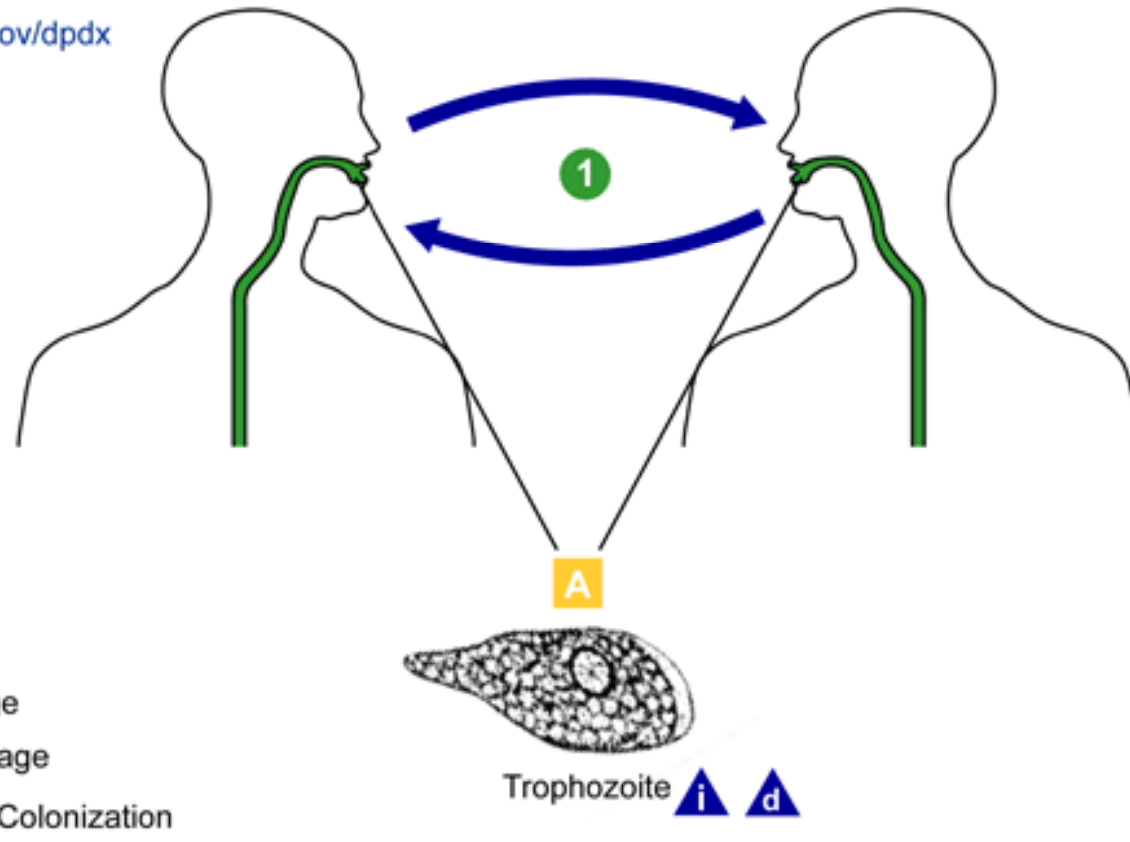
E. gingivalis - trophozoite



• 10-35 μm

Entamoeba gingivalis

E. gingivalis - cycle



Transmission & Pathology

- **Exposure to *E. gingivalis* comes from ingesting substances that have been exposed to and carry the organisms (water, food, utensils, oral contact).**
- **Believed to be associated with periodontal disease and gingivitis**
- **Has been associated to pulmonary abscess but one report only**
- **Has been associated to acute osteomyelitis of the mandible in one report**

Epidemiology

- **Worldwide**
- **Trophozoites are transmitted person-to-person orally by kissing or fomites (such as eating utensils) but also water/food**
- **Found in about 95% of patients with gum disease and about 50% of patients with healthy gums**

Diagnosis

- Identification of *E. gingivalis* is made by the finding of trophozoites in scrapings of the gums and teeth
- They may also be found in sputum in rare occasions